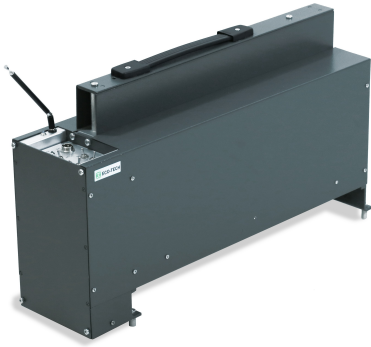


## Tapping Machine Type STM-1



Tapping Machine Type STM-1 is an impact sound generator conformable to requirements of Annex A of ISO-140-6/7.

Type STM-1 uses five 500 g hammers, free falling from 40 mm height. The machine operates with 10 impacts/sec what gives operating frequency of 10 Hz.

The unit is battery-operated unit, can be remotely switched on and off with cable or Wireless Remote Control device.

Tapping Machine Type STM-1 is a rugged and light-weight construction (the weight is approx. 11 kg), suitable to use under field conditions.

### Accessories:

- battery with charger;
- declaration of conformance;
- warranty card;
- user manual;
- transporting bag;
- remote control device.

### Technical Specifications

Hammers:	<i>5 hammers @ 500 g. Effective free falling height 40 mm</i>
Tapping frequency:	<i>10 impacts per sec, rpm controlled via feedback loop</i>
Power:	<i>internal rechargeable battery 12 V or external power supply</i>
Remote control:	<i>quartz remote control, effective range up to 100 m</i>
Charging time:	<i>up to 3 hours</i>
Dimensions (WxDxH):	<i>57x14x33 cm (feet retracted), 57x23x33 cm (feet extended)</i>
Weight:	<i>approx. 11 kg</i>

*We reserve the right to change the specifications without prior notice.*